

Device: 200 Series (HA 200, DAC 200, A 200, M 200)
Module/Subassembly: Main processor
Re: Firmware update via Windows PC, USB port,
T+A programming adaptor LE

Introduction

The firmware of the **200 series** processors can be updated using a Windows personal computer and the **T+A** programming adaptor.

This document describes the process with the programming adaptor and the Windows PC.

For updating the devices this way the **T+A** programming adaptor has to be connected to the Windows PC via USB cable. The programming adaptor is also connected to the **E2Link** socket on the rear panel of the **T+A** device. The programming is done by the special T+A software.

The update process for the main-processor is described in detail in the following paragraphs.

Contents

1. Hard- and software requirements
2. Connections
3. Master / Slave devices overview
4. PC software installation and settings
5. Programming
6. Finish update

1. Hard- and software requirements

- Windows PC with installed Windows 7, 8 or 10.
- **T+A** programming adaptor LE
- 50Mb of free disk space
- LAN patch cable
- Software update package (Firmware and flash tool) can be obtained from the electronics service at T+A elektroakustik (e-service@ta-hifi.com).

2. Connections

Establish the connections shown below (Fig. 1).
Connect the **T+A** device to the mains power supply!

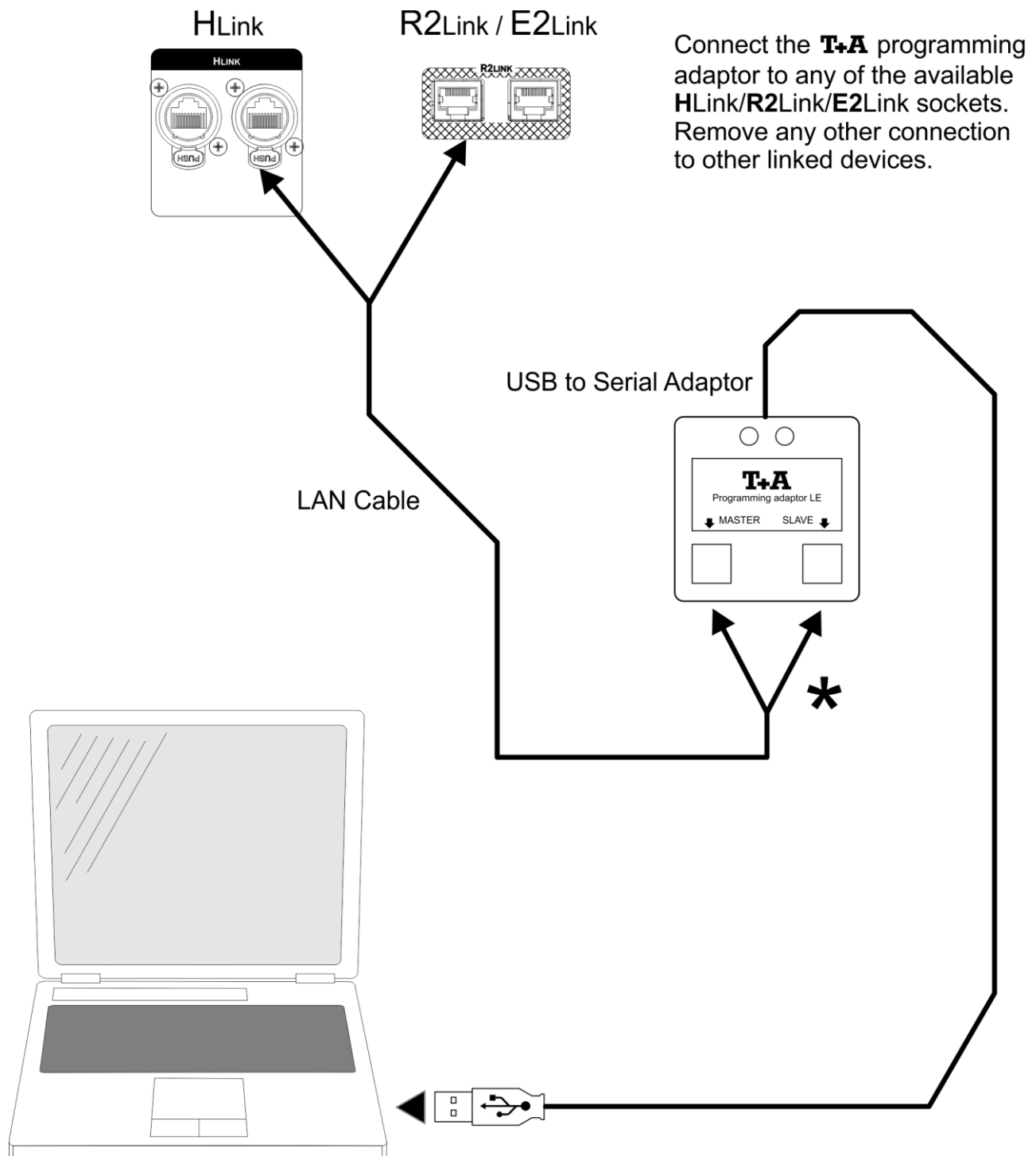


Fig. 1

* Connect your device to the master or slave socket according to the table on the next page.

3. Master / Slave devices overview

Device	Master / Slave
HA 200	Master
DAC 200	Master
A 200	Slave
M 200	Slave

4. PC software and settings

1. Connect the programming adaptor to an usb port of your pc and wait until windows has installed the driver.
2. Open the Device Manager to find out which COM port is used for the USB-Serial Port.

Windows 8:

Windows key + X → Control Panel > Device Manager

Windows 10:

Windows key + X → Device Manager

Earlier Windows versions:

Start > Control Panel → Device Manager

Open the item “Ports (COM & LPT)”.

The number of the used COM port appears in the brackets behind the entry “**USB Serial Port**” (for example COM 6 in figure 2)

If several ports are displayed and you are not sure which one is the correct one, you can unplug the device and plug it in again, while watching the list of ports.

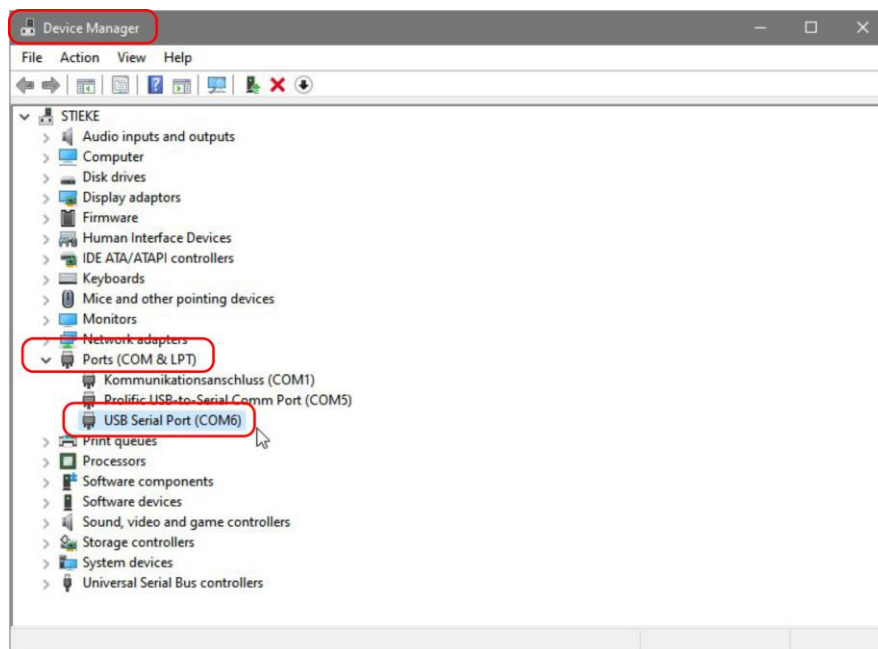
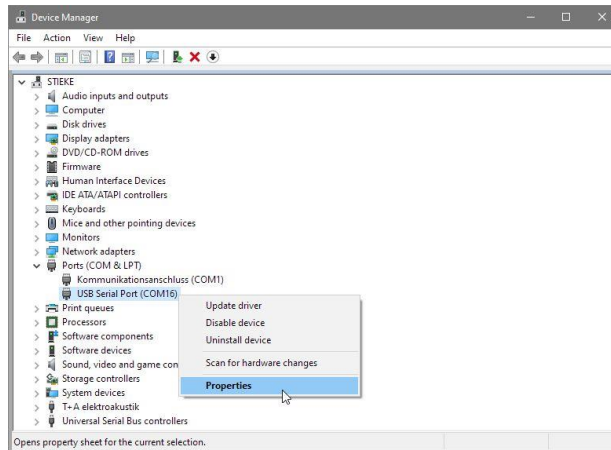


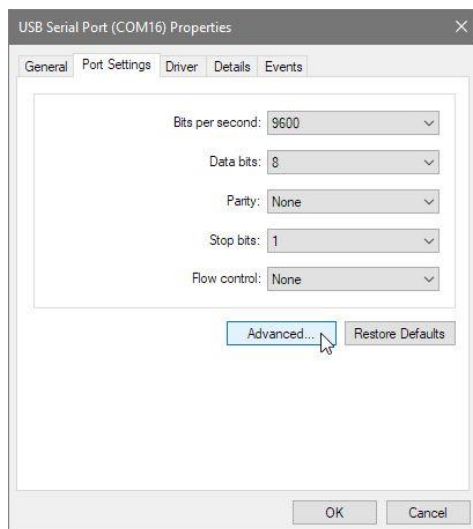
Fig. 2

3. For the firmware update the programming tool E_Link_UpdateTool.exe is needed. Please start the programming tool on your PC by executing the file “E_Link_UpdateTool.exe”.

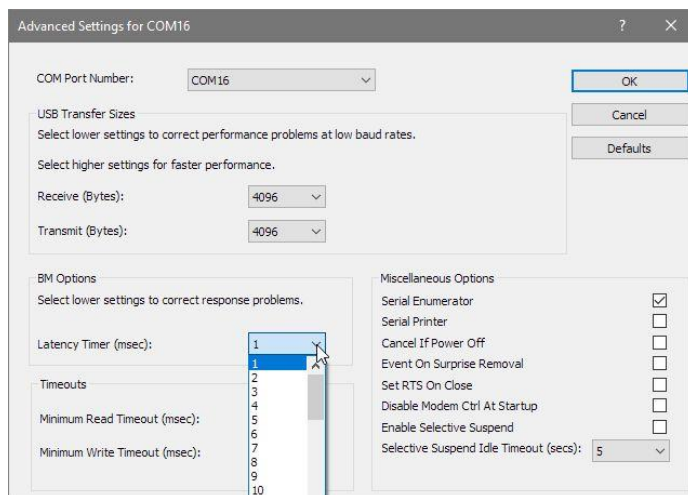
4. Open the settings for the COM port by clicking the right mouse button.



5. Under the Port settings tab, click the Advanced button.

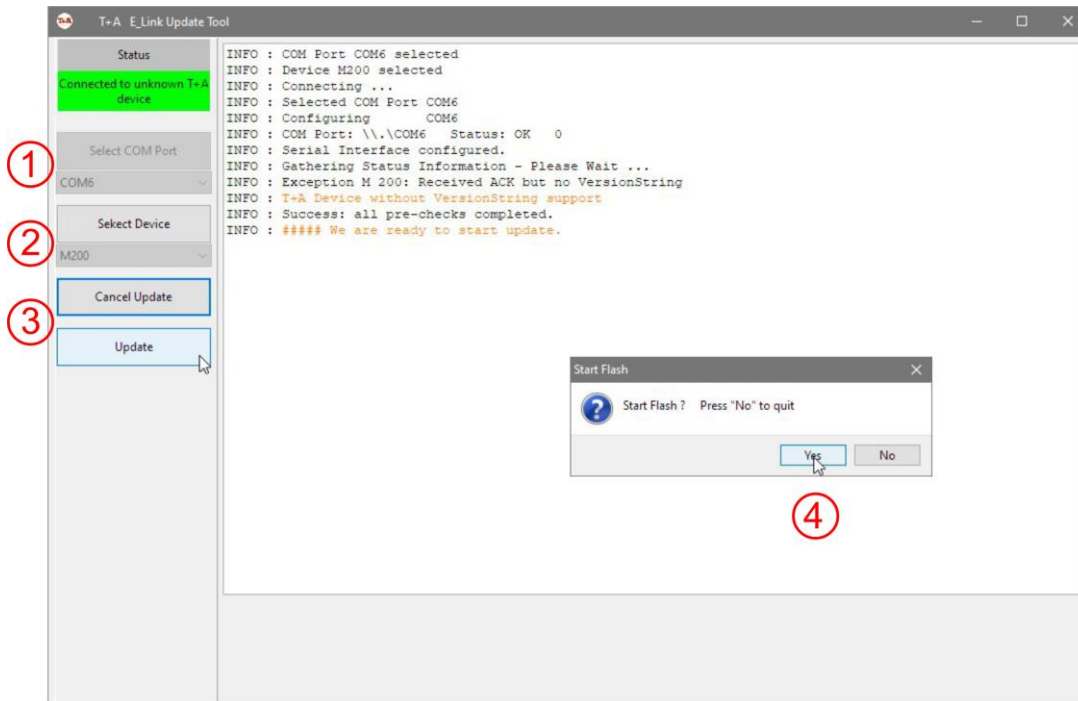


6. Set the latency time to 1 msec



5. Programming

- Select the correct COM port.
- Select the device to be programmed.
- Click on Update and select the file with the firmware.
- Confirm the update process.
- Wait until the update is completely finished.



6. Finish update

- Disconnect the connection between the programming adaptor and the device.
As long as the programming adaptor is connected, malfunctions of the device may occur.

History

Rev 1.0 initial Version

15/11/2022 (Sti)

Remarks